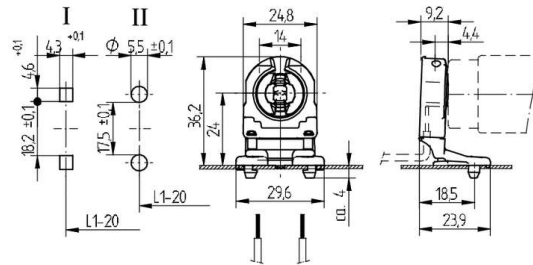


 Create pdf

Lampholders and starter holders

26.307.1023

G13 Push in lampholders



L1-20: Recommended dimension - The distance between the cut-outs and the tolerance should be governed by the dimensions of the respective lamps and luminaires.

colour	pkg.	wt.	part no.
white	500	6 g	26.307.1023.50

Approval: additional cULus (660W /600V)

Wiring: through the body








Lamp centre: 24 mm

Snap in pins for cut-outs $\Phi 5.5$ or 4.3×4.6 mm

Housing: PC

Rotor: PBT

- Snap in pins for IP 40
- A pair of lampholders provides a lamp length tolerance compensation of 3 mm

T 130	Tm 110	U out 500 V					 18 AWG 0.5 - 1.0 mm ²	 0.5 - 1.1	
-------	--------	----------------	---	---	---	---	--	--	---

Document generated on: Fr, 3. February 2017 - 11:06